

RINGER ROUND – UP THIS WEEK IN HORSESHOES #119-2021 – JULY 13, 2021



EDITOR: Sam Tomasevic
7987 Graham Ave.
Burnaby BC V3N 1V8
Website: www.bchorseshoe.com

Telephone: 604-328-5276
Email: samtom@telus.net



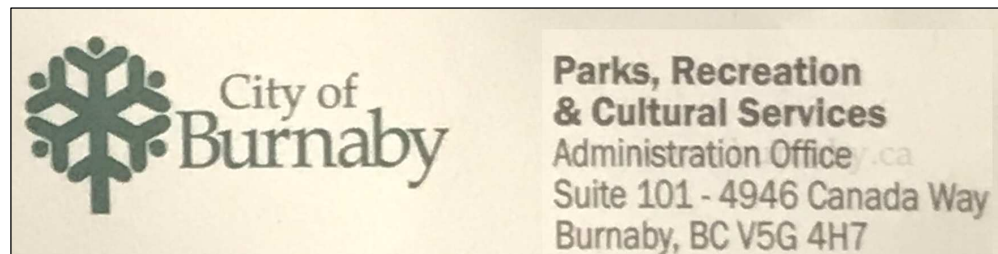
GET WELL SOON – NEIL LAROCQUE – FORMER SALMON ARM MEMBER – SOON TO JOIN VICTORIA HORSESHOE CLUB

From July 8, 2021 I got myself into a bit of a pickle, I am 4weeks getting over a small stroke, spent 7 days in hosp. And I am of course not driving for three months, also have a cracked sternum from cpr, boy talk about getting my wings clipped in a hurry, anyway I am doing OK, I apparently have a brain bleed from a concussion from years ago which was activated from the hike, that turned into a seizure and then a small stroke, I am pretty lucky guy Sam, but I will be back when the body says go man go!!

2021 BC CHAMPIONSHIPS INFORMATION – PAGES 8-10

UPCOMING TOURNAMENTS

July 18 61-21-35	Cloverdale Open	Jim Grant Email	604-313-1235 j.grant.6wd@gmail.com
---------------------	-----------------	------------------------------------	---------------------------------------





 **PHI HOTEL**
GROUP

Fairfield[®]
BY MARRIOTT

KAMLOOPS, BC



KAMLOOPS, BC

 **PACIFIC**
INN & SUITES

KAMLOOPS, BC


Holiday Inn
& Suites

KAMLOOPS, BC

Hospitality
Inn

KAMLOOPS, BC



VERNON, BC



VERNON, BC



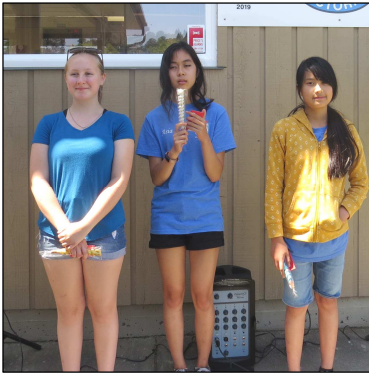
OSOYOOS, BC

@PHIHOTELGROUP WWW.PHIHOTELGROUP.COM

VICTORIA GVHPA OPEN SANCTIONED TOURNAMENT NUMBER 61-21-033 07/10/21

JUNIORS - CLASS A		W-L	H/G	Rs	S/P	PERCENT
1	ASIA BOWDENVICTORIA	6-1	20.00%	17 144	11.80%	
2	ERIKA MCNABVICTORIA	5-2	25.00%	20 140	14.28%	
3	EMILY BOWDENVICTORIA	2-4	5.00%	3 120	2.50%	
4	SYDNEY MCCUTCHENON .VICTORIA	0-6	5.00%	2 124	1.61%	

MEN - CLASS A		W-L	H/G	Rs	S/P	PERCENT
1	TOM MOFFATVICTORIA	6-0	75.00%	140 244	57.37%	
2	KEVIN CUTHBERTVICTORIA	3-3	50.00%	153 354	43.22%	
3	DALTON MOFFAT JR. BOY VICTORIA	3-3	59.30%	126 314	40.12%	
4	SANTE MICHELIN ...VICTORIA	0-6	30.40%	63 244	25.81%	



EMILY ASIA ERIKA



KEVIN TOM DALTON

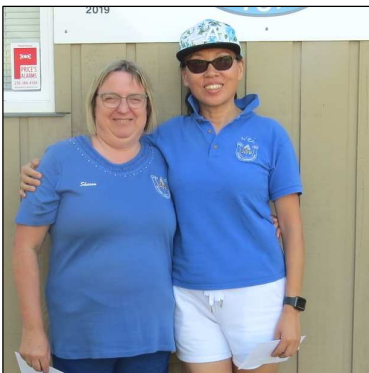


DAN AND SPENCE

MEN - CLASS B		W-L	H/G	Rs	S/P	PERCENT
1	DAN MARBLE LADYSMITH	4-0	20.00%	30 186	16.12%	
2	SPENCE MCCALLA ... VICTORIA	3-1	29.40%	29 166	17.46%	
3	DARRELL KOLODZIEJAK VICTORIA	2-2	26.60%	20 184	10.86%	
4	RON BOROSKI SOOKE	1-3	12.50%	18 210	8.57%	
5	ED MCNABB VICTORIA	0-4	7.60%	8 162	4.93%	

WOMEN - CLASS A		W-L	H/G	Rs	S/P	PERCENT
1	WEI XIAO VICTORIA	5-1	50.00%	94 228	41.22%	
2	JOY DEVOCHT SOOKE	3-3	45.60%	94 244	38.52%	

WOMEN - CLASS B		W-L	H/G	Rs	S/P	PERCENT
1	SHARON DUNN VICTORIA	3-3	50.00%	110 266	41.35%	
2	MARLENE HARGREAVES .VICTORIA	1-5	28.50%	44 222	19.81%	



SHARON AND WEI



HEATHER, SHELLEY AND LYNN



BARB, ELAINE AND PATTI



RYAN SCHWARTZ

GENERAL MANAGER 375 Water St,
 RYAN@STEAMWORKS.COM Vancouver, BC
 604-689-2739 hoodie 2 wine glasses



WOMEN	-	CLASS C	W-L	H/G	Rs	S/P	PERCENT
1	SHELLEY EVANS SOOKE	6-0	34.30%	57	210	27.14%
2	LYNN COUSINS VICTORIA	3-3	28.50%	41	220	18.63%
3	HEATHER MCARTHUR	.. VICTORIA	3-3	44.40%	43	246	17.47%
4	LINDA ANDERSON SOOKE	0-6	12.00%	16	204	7.84%

WOMEN	-	CLASS D	W-L	H/G	Rs	S/P	PERCENT
1	ELAINE MCMATH SOOKE	4-1	28.50%	29	174	16.66%
2	BARB HUDOCK VICTORIA	3-2	31.80%	31	182	17.03%
3	PATTI JOHNSONVICTORIA	2-2	25.00%	22	158	13.92%
4	OLIVIA HOLLINGER	...SOOKE	1-3	17.80%	21	152	13.81%
5	MARION MCNABBVICTORIA	1-3	15.90%	25	182	13.73%

ELDERS 30 FEET	-	CLASS A	W-L	H/G	Rs	S/P	PERCENT
1	BOB MCCAULEYVICTORIA	4-0	78.10%	99	148	66.89%
2	JERRY MELISSAVICTORIA	3-1	58.00%	116	210	55.23%
3	DOUG BOWMANVICTORIA	2-2	60.50%	91	182	50.00%
4	BARRY DEVOCHTSOOKE	1-3	48.00%	66	160	41.25%
5	CLAYTON WHITEVICTORIA	0-4	37.50%	57	168	33.92%



DOUG, BOB AND JERRY



MALCOM, RON AND STEVE

ELDERS 30 FEET	-	CLASS B	W-L	H/G	Rs	S/P	PERCENT
1	RON FLEETVICTORIA	4-0	52.96%	68	168	40.47%
2	STEVE BISHOPSOOKE	3-1	50.00%	60	148	40.54%
3	MALCOM MCLELLANSOOKE	2-2	40.00%	55	178	30.89%
4	RON FLEETSOOKE	1-3	27.00%	43	194	22.16%
5	LANCE WHITWORTHVICTORIA	0-4	36.80%	60	176	34.09%

ELDERS 30 FEET	-	CLASS C	W-L	H/G	Rs	S/P	PERCENT
1	VINCE HERKELLADYSMITH	5-0	34.60%	47	162	29.01%
2	DEDAR DILLONVICTORIA	4-1	39.20%	44	168	26.19%
3	NICK NICHOLASVICTORIA	2-3	30.00%	35	160	21.87%
4	KEN BRADLEYSOOKE	2-3	34.30%	44	212	20.75%
5	CHRIS VANIERSOOKE	2-3	21.70%	28	188	14.89%
6	JOHN LAUNDERVICTORIA	0-5	13.00%	22	190	11.57%

Joseph Richard Group Public Houses (Townhall Public House, Micky's Public House, Edith + Arthur Public House, The Hemingway Public House, The Henry Public House)

Gift certificate dinner for 2 people. EXPIRES JULY 31, 2020

MORGAN MORENO
Guest Relations Manager

Value is \$75

P: 604.503.0055 E: m.moreno@jrg.ca 5708 176th Street Surrey, BC V3S 4E3 jrg.ca



Horseshoes and Related Items
NHPA Distributor
 Serviced by: Ron & Polly Murphy

donated a pair of Can Am horseshoes
 PO BOX 40, Grapeland, TX 75844 (936) 687-5149

and a bag that holds 2 pair of horseshoes.
 e-mail: horseshoesandrelateditems@gmail.com
Stores.horseshoesandrelateditems.com
 Ron: (936) 827-5669 Polly: (936) 520-8826



NICK, DEDAR AND VINCE



JIM HOWARD

	ELDERS 30 FEET	- CLASS D	W-L	H/G	Rs	S/P	PERCENT
1	JIM HOWARD	VICTORIA	5-1	35.00%	46	186	24.73%
2	BEV LICHTY	VICTORIA	4-2	40.00%	42	206	20.38%
3	PHIL OVERHILL	SOOKE	3-3	20.50%	20	184	10.86%
4	JOE DANYLEKO	SOOKE	0-6	10.00%	14	200	7.00%

Thermo blanket, wind breaker, wireless speakers and ear pods



Reggie Tanzola PERSONAL REAL ESTATE CORPORATION
Real Estate Advisor
 Rennie & Associates Realty Ltd.

T 604.681.8898
 M 778.917.6889
 rtanzola@rennie.com

51 East Pender Street
 Vancouver, BC Canada V6A 1S9
 rennie.com/reggietanzola



Barb Janzen, CAIB
 Commercial Insurance Account Executive
 Direct: 604-796-4007

barb.janzen@hubinternational.com
 www.hubinternational.com

HUB International
 Barton Insurance Brokers

7072 Pioneer Avenue
 Box 350
 Agassiz, BC
 V0M 1A0
 Bus: 604-796-2228
 Toll Free: 1-800-668-2112
 Cell: 604-229-5305
 Fax: 604-796-2232

ABBOTSFORD SUMMER OPEN SANCTIONED TOURNAMENT NUMBER 61-21-032 07/11/21

	JUNIORS - CLASS A (30 Shoes)	W-L	H/G	Rs	S/P	PERCENT	
1	PARKER ROWELL	ABBOTSFORD	6-0	30.00%	32	180	17.77%
2	NIA SIGANAKIS	ABBOTSFORD	3-3	6.67%	7	180	3.88%
3	NIKITAS SIGANAKIS	ABBOTSFORD	2-4	6.67%	6	180	3.33%
4	EMMA HOPKINS	ABBOTSFORD	1-5	3.33%	2	180	1.11%

	MEN - CLASS A (50 Shoes)	W-L	H/G	Rs	S/P	PERCENT	
1	ROSS PEARSON	ABBOTSFORD	3-1	5.26%	7	168	4.16%
2	ROBIN DEGRAAF	CLOVERDALE	3-1	17.39%	26	210	12.38%
3	KEVIN KOSTUK	ABBOTSFORD	2-2	35.71%	51	192	26.56%
4	ANTONIO SIGANAKIS	ABBOTSFORD	1-3	12.50%	15	174	8.62%
5	DAN HARDIE	CLOVERDALE	1-3	13.04%	14	164	8.53%

	ELDERS 30 FEET CLASS A (40 Points)	W-L	H/G	Rs	S/P	PERCENT	
1	BRIAN RICKABY	ABBOTSFORD	4-1	68.42%	103	194	53.09%
2	JIM WILLIAMS	ABBOTSFORD	3-2	70.00%	112	212	52.83%
3	ALLAN CUMMINGS	CENTRAL PARK	3-2	64.00%	117	246	47.56%
4	DON FLEMING	ABBOTSFORD	3-2	57.89%	96	206	46.60%
5	SIDNEY DEHAAN	ABBOTSFORD	2-3	45.00%	77	204	37.74%
6	DARRYL OLSON	ABBOTSFORD	0-5	15.91%	19	178	10.67%

	MIXED - CLASS A (40 Points)	W-L	H/G	Rs	S/P	PERCENT	
1	HEIDI HARAGA	ABBOTSFORD	4-1	53.33%	95	198	47.97%
2	HART DREXLER	ABBOTSFORD	4-1	43.75%	85	226	37.61%
3	BRUCE KEHLER	ABBOTSFORD	3-2	35.00%	63	230	27.39%
4	MARCEL FOURNIER	CLOVERDALE	2-3	48.08%	89	264	33.71%
5	JIM GRANT	CLOVERDALE	2-3	29.41%	56	240	23.33%
6	DWAYNE BERTRAND	ABBOTSFORD	0-5	16.67%	24	194	12.37%



Buying or Selling?
"Lets Talk Real Estate"

Jim Williams Realtor
 Call/Text 604 463 2200 Email willja@shaw.ca

RE/MAX Lifestyles Realty
 Web: www.6044632200.com

MIXED - CLASS B (35Pts/40Sh)	W-L	H/G	Rs	S/P	PERCENT
1 LLOYD ANDERSONCLOVERDALE	4-0	25.00%	34	156	21.79%
2 SUE BERTRANDABBOTSFORD	3-1	25.00%	32	160	20.00%
3 LUIK TANNERABBOTSFORD	2-2	38.24%	36	154	23.37%
4 DOUG WILLIAMSABBOTSFORD	1-3	17.50%	21	158	13.29%
5 MAVIS NORRISHABBOTSFORD	0-4	13.64%	15	160	9.37%

MIXED - CLASS C (30Pts/40Sh)	W-L	H/G	Rs	S/P	PERCENT
1 CHERYL DEGRAAFCLOVERDALE	3-1	20.00%	26	164	15.85%
2 VALARIE ANDRESABBOTSFORD	3-1	18.42%	21	158	13.29%
3 DOUG FUNKABBOTSFORD	2-2	17.50%	23	164	14.02%
4 GREG ALTILIAABBOTSFORD	2-2	15.00%	21	160	13.12%
5 VIC HARAGAABBOTSFORD	0-4	10.00%	10	158	6.32%

MIXED - CLASS D (30Pts/40Sh)	W-L	H/G	Rs	S/P	PERCENT
1 AL ROBERTSABBOTSFORD	5-0	18.75%	23	190	12.10%
2 TAMMY SIGANAKIS ...ABBOTSFORD	3-2	17.50%	18	200	9.00%
3 TRACY SPURGEONABBOTSFORD	3-2	15.00%	15	192	7.81%
4 DON MCSWAINABBOTSFORD	2-3	2.50%	4	204	1.96%
5 DAVE WOODABBOTSFORD	1-4	15.00%	14	194	7.21%
6 EVELYNE ROYABBOTSFORD	1-4	5.00%	6	200	3.00%



TAMMY AND AL



CHRYL AND DOUG



SUE, LLOYD AND LUIK



JIM, BRIAN, ALLAN AND DON



HART, HEIDI, BRUCE AND MARCEL



ROBIN, ROSS AND KEVIN



NIA
PARKER
NIKITAS
EMMA

Matt Leung donated an emergency backpack, an inflatable air bed, Service Manager a mini tool kit and a portable air compressor.

matt.leung@openroadhyundai.com
T 604 606 9088 F 604 273 3621

OpenRoad Hyundai Richmond
5400 Minoru Blvd
Richmond, B.C. Canada V6X 2A9

OpenRoadHyundaiRichmond.com



HYUNDAI



Tommy's Shoe Shack

Guelph and Area Horseshoe Sales Representative

 pair of TNT shoes \$65.00 **Tom Gallina 519-824-3531** pair of TNT shoes \$65.00

6 Woodfield Cres., R.R.#5 Guelph ON N1E 0P1 Canada

Email: horseshoez@hotmail.com

GET WELL SOON

Roger Helgeson, Jim Ball and Wendy Tomasevic – all are on the mend.

CANADA 21 SERIES - #10 JULY 11, 2021

Mixed A	St	Won	Lost	R%	MIXED C	ST	WON	LOSR	R%
1 Bob McCAULEY	BC	6	1	76.43	1 Lia SNELL	ON	7	0	53.57
					3 Brian RICKABY	BC	4	3	50.00
					5 Dalton MOFFAT	BC	3	4	45.00
MIXED B	St	Won	Lost	R%	MIXED D	ST	WON	LOST	R%
1 Wei XIAO	BC	7	0	60.71	1 June LAZENBY	BC	6	1	32.86
2 Barry DEVOCHT	BC	5	2	63.57	2 Doug WILLIAMS	BC	6	1	30.00
7 Jim WILLIAMS	BC	1.5	5.5	48.57	3 John LAUNDER	BC	2.5	4.5	15.71
8 Tom MOFFAT	BC	1	6	43.57					
MIXED E	ST	WON	LOST	R%					
1 Joseph HATCHER	MB	7	0	5.00					
2 Ericka MCNAB	BC	6	1	12.14					
3 Asia BOWDEN	BC	4.5	2.5	10.71					
4 Emily BOWDEN	BC	4.5	2.5	7.86					
5 Greg OIKAWA	BC	3	4	2.14					



CLOVERDALE OPEN

#11

Sanction #61-21-35

JULY 18, 2021

Game Day SIGN IN BY 8:30am - PLAY AT 9am

\$15 Entry

Breakfast 7:45 to 8:45am Ham, Eggs, Hash Browns & Toast

Lunch approx. noon Burger with Salad

50/50 Pie

Registration Closes Friday July 16th, 9pm

Call or Text Jim at 604-313-1235 to Register

Sponsoring the Abbotsford Club for 32 years

Highwayman

PUB & LIQUOR STORE

Great Prices, Selection, Location & Service

"Where Friends Meet"



VOTED #1 IN ABBOTSFORD!




Liquor Store
 Open from 9am to 11pm including Holidays

Pub
 Open from 10am to 1am including Holidays

32470 Simon Ave. • Abbotsford

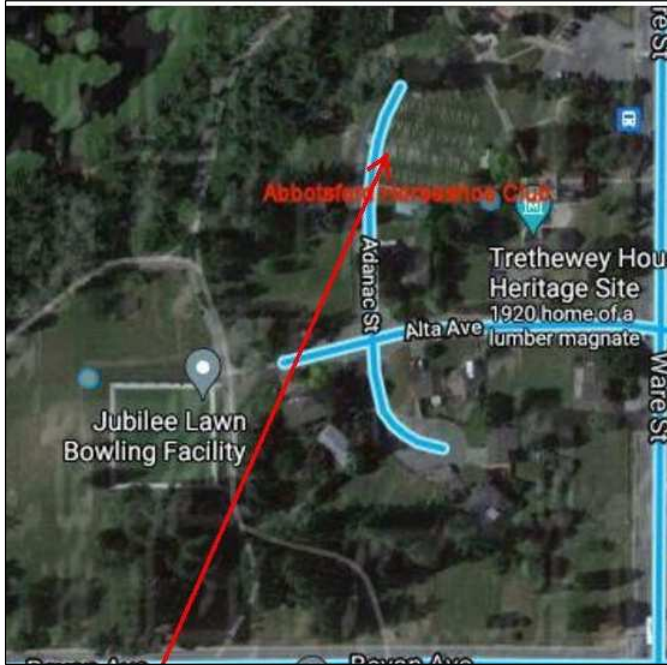
Pub 604.859.3711
Liquor Store 604.850.0007
www.HighwaymanPubonline.com



7

BC CHAMPIONSHIPS – RV PARKING AND TENTING

Parking Godson Elementary School 33130 Bevan Ave, the Godson Parking lot on Sept 3 at 12 noon until Sept 5 at 6pm. This is a block and a Half from the horseshoe pits.



BC CHAMPIONSHIP – ABBOTSFORD HORSESHOE CLUB – SEPTEMBER 4-5, 2021

Abbotsford Horseshoe Club is pleased to be able to host the 2021 BC Championships (Sept 4th - Sept 5th) thanks to our community sponsor Otter Co-op and the Highwayman Pub.

RV, Camper and Tenting Parking is available (across the street from the Abbotsford Horseshoe Club) at Godson Elementary School from 12 pm on Friday September 3rd to 6 pm Sunday September 5th. The overnight fee is \$10.00 per night. (No Hook-Ups) Code will be provided to bathrooms in our club house.

Please email Jim Williams if you would like to reserve a spot. willja@shaw.ca See attached Map.

Pits will be open Friday for those who would like to put in some practise time.

Friday September 3, 2021 – BC HORSESHOE ASSOCIATION Annual general meeting 7:00PM

Saturday September 4th

BC Horseshoe Association 50/50 draw.

Saturday September 4th 6-8 pm

Join us at the Highwayman Pub 32470 Simon Ave, Abbotsford. Please let Jim Williams know (willja@shaw.ca) if you will be going to the Pub, so they can be ready for us. They have sponsored our tournament, so let's support them.

Saturday, September 4th,

It's been a while since we have served up breakfast; the Kitchen Ladies are going all out!

Breakfast:

Served 7 am To 9am

Scrambled Eggs, Bacon, French toast and Coffee \$6.00

Lunch:

Served 11.30 to 1 pm

Spaghetti and Meat sauce with garlic toast and Caesar Salad \$6.00

Dessert Assorted Homemade Fresh Pies \$2.00

Sunday September 5th

Breakfast Served 7-9 pm

Eggs, sausage, hash browns, toast, and coffee \$6.00

Lunch 11.30 to 1 pm

Beef, Chicken, or Veggie burgers or Hot Dogs with coleslaw and coffee. \$6.00

Dessert – Selection of cakes and pies. \$2.00

Abbotsford Horseshoe Club - 50/50.

Check out the selection of ticket draw prizes September 5th! Don't miss our specialty wood key chain dog urn's.

It will be a fun weekend of horseshoes! We are looking forward to seeing all of you at the BC Championship! It's been too long since we have all come together, so let's get together and celebrate!

Super 8 Motel

1881 Sumas Way

Ph: 604-853-1141

Comfort Inn

2073 Clearbrook Rd.

PH: 604-859-6211

Comfort Inn

2073 Clearbrook RD

Ph: 604-859-6211

Best Western Regency Inn

3210 Marshall Rd

Ph:604-853-3111

Sandman Inn

32720 Simon Ave.

Ph: 604-556-7263

Alpine Motor Inn

32111 Marshall Rd

PH: 604-859-3171

Red Lion Inn & Suites

Abbotsford

2509 Pauline St,

PHONE: (604) 859-5255

Aloha Trailer Park

29666 Fraser Hwy

PH: 604-856-2366



B.C. CHAMPIONSHIPS SEPTEMBER 04-05, 2021
ABBOTSFORD HORSESHOE CLUB
ENTRY DEADLINE – AUGUST 01, 2021
REGISTRATION FEE: \$25.00
JUNIORS/PEE WEES FREE
REFUND DATE: AUGUST 28, 2021



ENTRY FORM

NAME: _____ **Horseshoe Canada#** _____

ADDRESS: _____

CITY: _____ **POSTAL CODE:** _____

TELEPHONE NO: _____

PLEASE NOTE NO MINIMUM NUMBER OF TOURNAMENTS REQUIRED TO PLAY IN THIS TOURNAMENT

CLASS: CHECK ONE ONLY

OPEN MEN'S – OPEN TO ANY MAN REGARDLESS OF AGE IF YOU ARE PITCHING FROM 40 FEET

OPEN ADULT LADIES (18+ OLDER).

JUNIORS – ENTRANTS MUST BE 18 YEARS OLD OR LESS FOR THE ENTIRE 2021 CALENDAR YEAR

PEE WEES MUST BE 12 YEARS OLD OR YOUNGER FOR THE ENTIRE 2021 CALENDAR YEAR

ELDERS MEN 30 FT any man that turns 65 years of age in 2021, is older than 65, or has an approved medical exemption may enter the ELDERS CLASS

REGISTRATION FEE: \$25.00 MUST ACCOMPANY THIS ENTRY FORM.

Dress Code: Horseshoe Canada/NHPA Standards, neat and tidy appearance. Your last name and Club professionally lettered on the back of your shirt. Closed-toe-shoes must be worn. No sleeveless shirts allowed.

CHEQUES/MONEY ORDERS PAYABLE TO: B.C. HORSESHOE ASSOCIATION. MAIL ENTRIES TO:

BRIAN RYDER
#5 - 14008 Victoria Road North,
Summerland, B.C. V0H 1Z5.

ALL PLAYERS WILL PLAY SEPTEMBER 04-05, 2021

IN CASE OF EMERGENCY PLEASE ADVISE IF YOU HAVE ANY MEDICAL PROBLEMS:

SPONSORED BY, THE B.C. HORSESHOE ASSOCIATION. HOSTED BY THE ABBOTSFORD HORSESHOE CLUB